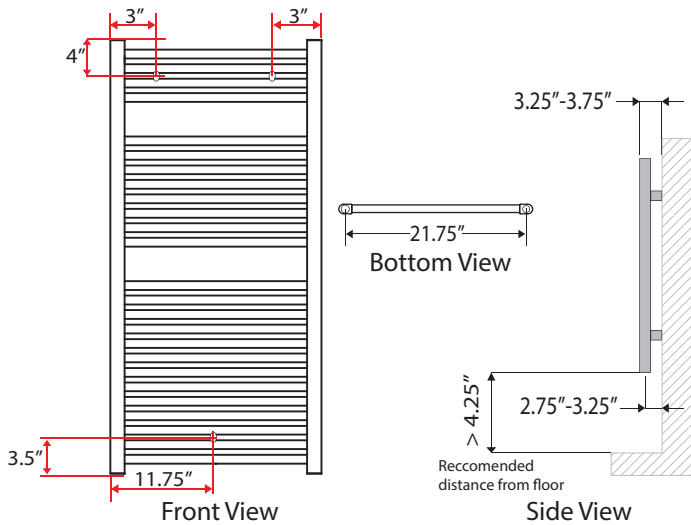
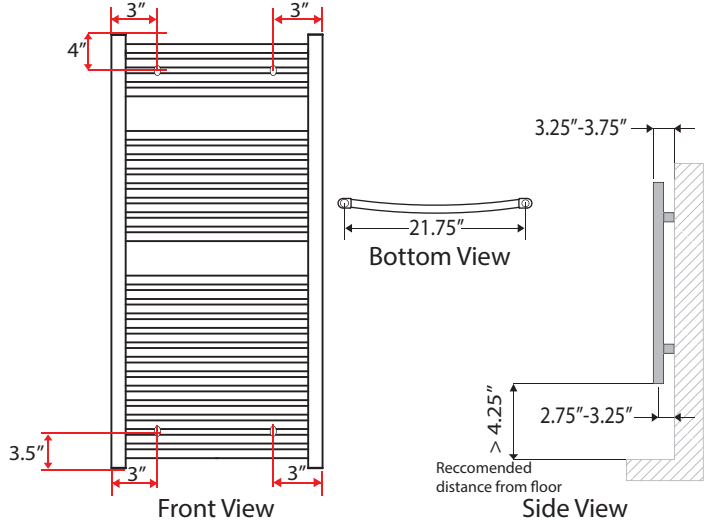


ECOSTYLE TOWEL BAR INSTALLATION DIAGRAM

Straight Towel Bar



Curved Towel Bar



Straight Towel Bar Components

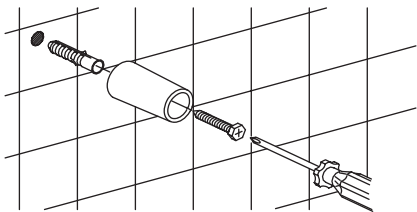
- | | | | |
|------------------|---------------------|------------------|-------------------------------|
| QTY
3x | | QTY
1x | |
| | Wall Stand Off Base | | Air Bleeder With Key |
| 3x | | 3x | |
| | Adjustable Post | | Adjustable Post Locking Screw |
| 3x | | 3x | |
| | Lag Screw | | Finished Bracket End Cap |
| 3x | | | |
| | Wall Anchor | | |

Curved Towel Bar Components

- | | | | |
|------------------|---------------------|------------------|-------------------------------|
| QTY
4x | | QTY
1x | |
| | Wall Stand Off Base | | Air Bleeder With Key |
| 4x | | 4x | |
| | Adjustable Post | | Adjustable Post Locking Screw |
| 4x | | 4x | |
| | Lag Screw | | Finished Bracket End Cap |
| 4x | | | |
| | Wall Anchor | | |

Using the dimensions above, determine your bracket locations for mounting.

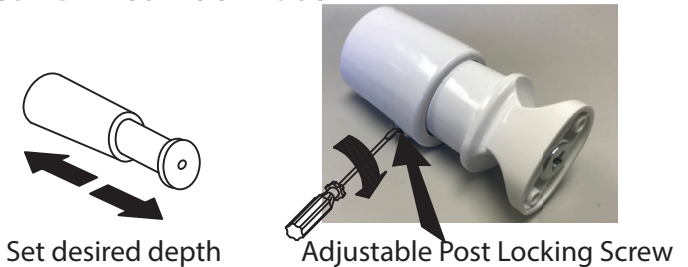
1



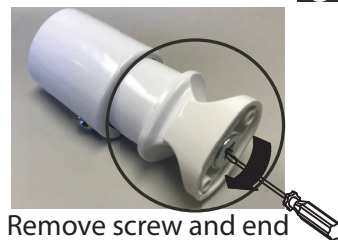
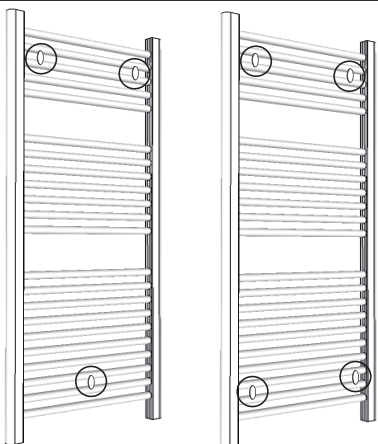
Install LAG SCREW through center of WALL STANDOFF BASE into WALL ANCHOR unless going into a wall stud.

Slide ADJUSTABLE POST into the WALL STANDOFF BASE and tighten down to desired depth using the ADJUSTABLE POST LOCKING SCREW

2

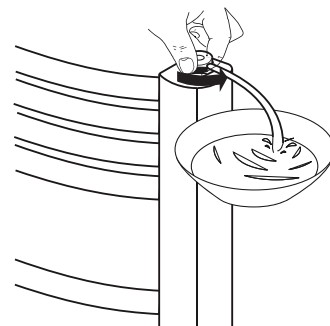


3



Remove screw and end piece and place towel bar into position, put the end piece back on with screw and place FINISHED CAP on the end.

4



Install AIR BLEEDER on top of towel bar. After Filling System, Bleed Air From Unit Untill Steady Stream Of Water Flows.

ECOSTYLE TOWEL BAR FITTINGS

Basic Towel Bar Valves



Angled radiator valve body.
Convertible from standard manual operation to automatic control with thermostatic control heads.
Chrome plated.
Max. working pressure: 150 psi.

PART #	DESCRIPTION
RV-338452	1/2" Angled Thermostatic



Straight radiator valve body.
Convertible from standard manual operation to automatic control with thermostatic control heads.
Chrome plated.
Max. working pressure: 150 psi.

PART #	DESCRIPTION
RV-339452	1/2" Straight Thermostatic



Angled isolation and balancing valve.
Chrome plated.
Max. working pressure: 150 psi.

PART #	DESCRIPTION
RV-342452	1/2" Angled Shutoff



Straight isolation and balancing valve.
Chrome plated.
Max. working pressure: 150 psi.

PART #	DESCRIPTION
RV-343452	1/2" Straight Shutoff

Towel Bar Fittings



Compression fitting, fits 1/2" hard copper.
With o-ring seal.
Max. working pressure: 150 psi.
Working temperature range: 41-250°F.
Chrome plated.

PART #	DESCRIPTION
RV-NA10555	1/2" Copper Compression



Sweat connection fitting fits 1/2" copper.
Max. working pressure: 150 psi.
Working temperature range: 41-250°F.
Chrome plated nut.

PART #	DESCRIPTION
RV-NA10535	1/2" Copper Sweat



Universal PEX Fittings
Compatible with any ASTM F876 single layer PEX.
Max. working pressure: 150 psi.
Working temperature: 41-180°F.
Chrome plated nut.

PART #	DESCRIPTION
RV-NA10536	3/8" nominal PEX
RV-NA10534	1/2" nominal PEX
RV-NA10537	5/8" nominal PEX

Towel Bar Accessories



PART #	DESCRIPTION
RV-508041	1/2" NPT Male
RV-508100	Replacement Cartridge



Towel Bar Robe Hook	
PART #	Finish
B-388132	White
B-388133	Chrome